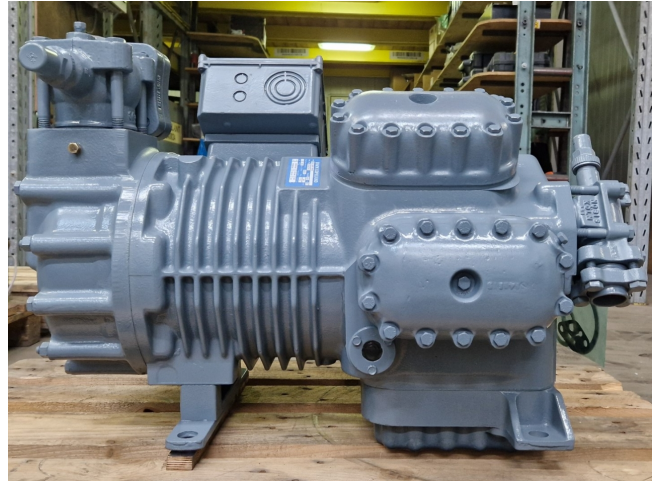


DWM D8SJ-1-600X BWM/D

Specifications

Brand	DWM
Type	D8SJ-1-600X BWM/D
Refrigerant	Freon
Refrigerant type	R407C
kW at 0°C/+40°C	142,5
kW at -5°C/+40°C	117,8
kW at -10°C/+40°C	96,3
kW at -20°C/+40°C	61,7
kW at -30°C/+40°C	36,2
Sight Glass	✓
m ³ / h	180 m ³ /h -1450 RPM
Remarks	Y.o.b. 2024
Weight in kg.	367 kg
Sizes	850x600x600 mm (LxWxH)
Stock	1

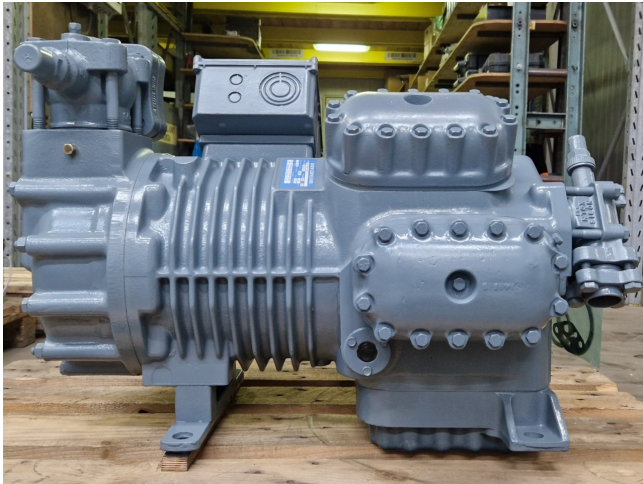


Description

Used DWM D8SJ-1-600X BWM/D

Renovated DWM Copeland D8SJ-1-600X BWM/D semi-hermetic piston compressor on Freon with a sight glass. The compressor has a displacement of 180 m³/h at 1450 RPM.

*Why choose for HOSBV? We are not only the largest used refrigeration specialist in Europe, but also, we deliver all equipment including an extensive test, warranty and industrial cleaning. *Optional we can also perform a new paint job and arrange the logistics.



DWM CORELAND					
TYP	D8SJ-1-600X BWM/D				
Fabr . Nr.	24H54277 PK	Baujahr	2024	R	407C
Max Oper press H/L	28/2,5	Bar V	180	M3/H ⁻	
3 -	1450	Min-1 (50Hz)	Prot.	IP 54	
Hz	Voltage	I Blok (LRA)	I Oper max		
50	380/420 ΔΔ	475-544	106	A	
60	440/480 ΔΔ	458-518	106	A	



